

# REPRINT A BOOT UP DORSET'S JURASSIC COAST

Rodney Legg



Fed up with being lectured by your walking guide books? Are you bored with being treated like a head-down hiker from the 1950s? Then Halsgrove's 'Boot Up' series of walking guides is for you – simple, straight forward and modern and with all the important information: where to park, where to go, where to take the kids and where's the pub!

Rodney Legg provides all the answers in ten walks, packed with colour photographs, along Dorset's unique World-Heritage Jurassic Coast. In hardback, small enough to slip into the pocket, colourful enough to keep as a souvenir; the new Boot Up Guide will be the indispensable bench-mark for the twenty-first century.

## ABOUT THE AUTHOR

Rodney Legg is a prolific author and historian who has published hundreds of country walks. Nationally he is active in the environmental movement having been chairman of the Open Spaces Society since 1989 and was a member of the ruling council of the National Trust from 1990–2009.

## HALSGROVE CATALOGUE

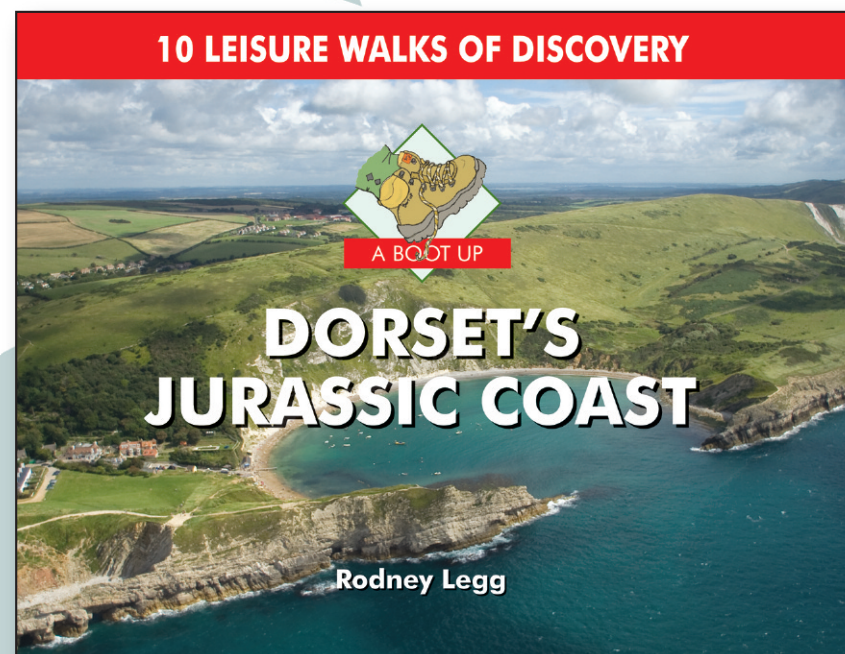
The full Halsgrove catalogue is available free or visit [www.halsgrove.com](http://www.halsgrove.com) for regional and category listings of available titles.

### Trade sales:

Sue Rhodes-Thompson –  
DDI 01823 653770 [suet@halsgrove.com](mailto:suet@halsgrove.com)

Halsgrove Publishing  
Halsgrove House,  
Ryelands Industrial Estate,  
Bagley Road, Wellington,  
Somerset TA21 9PZ  
Tel: 01823 653777  
Fax: 01823 216796  
[www.halsgrove.com](http://www.halsgrove.com)  
e-mail: [sales@halsgrove.com](mailto:sales@halsgrove.com)

## HALSGROVE TITLE INFORMATION



**Format:** Hardback with full colour cover, 64pp, 110x155mm, illustrated with colour photographs and sketch maps.

**Price:** £4.99

**ISBN:** 978 1 906887 65 0

**Imprint:** PiXZ Books

**Published:** 2008 (ISBN 978 1 84114 687 4), revised & reprinted March 2010



# Great Books from your Local Bookseller



# A BOOT UP DORSET'S JURASSIC COAST



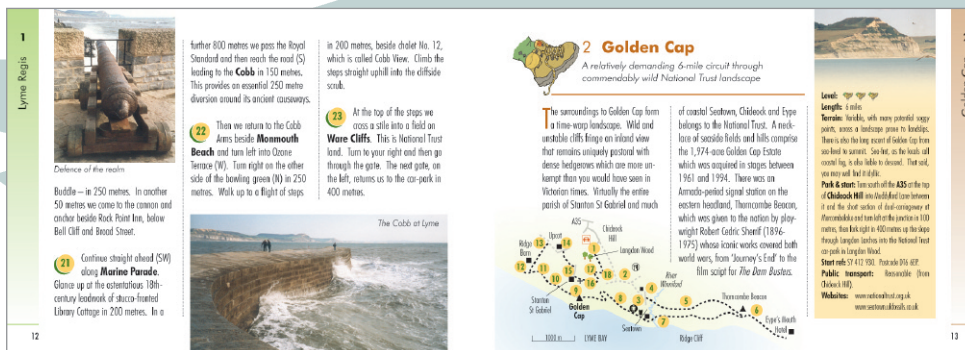
Church Ope Cove



Durdle Door



Chesil Beach view



Example of a double-page spread.



Smugglers Inn